



Town of Westlake

1 Million Gallon Ground

“Big One”

August 9, 2023



TEXAS TANK SERVICES

103 STACY DRIVE
WHITEHOUSE, TX. 75791
1-866-788-3483

**INSPECTION REPORT #2
1 MILLION GALLON GROUND
“BIG ONE”
TOWN OF WESTLAKE, TX**

GENERAL INFORMATION:

Date of Inspection:	8.9.2023
Tank Size:	1 Million Gallons
Tank Type:	Metal Welded Ground

Introduction: When Texas Tank Services performs any inspection and in-service cleaning service, we strictly adhere to the standard of all divers and in-tank equipment in accordance with AWWA Standard C652-02 for disinfection. All gear and equipment entering the potable water tank are cleaned and disinfected, and the dressed diver is sanitized with a 200-PPM Chlorine concentration prior to entry into the system. The inspector/diver utilizes a helmet and dry suit and is in direct voice communication with external personnel.

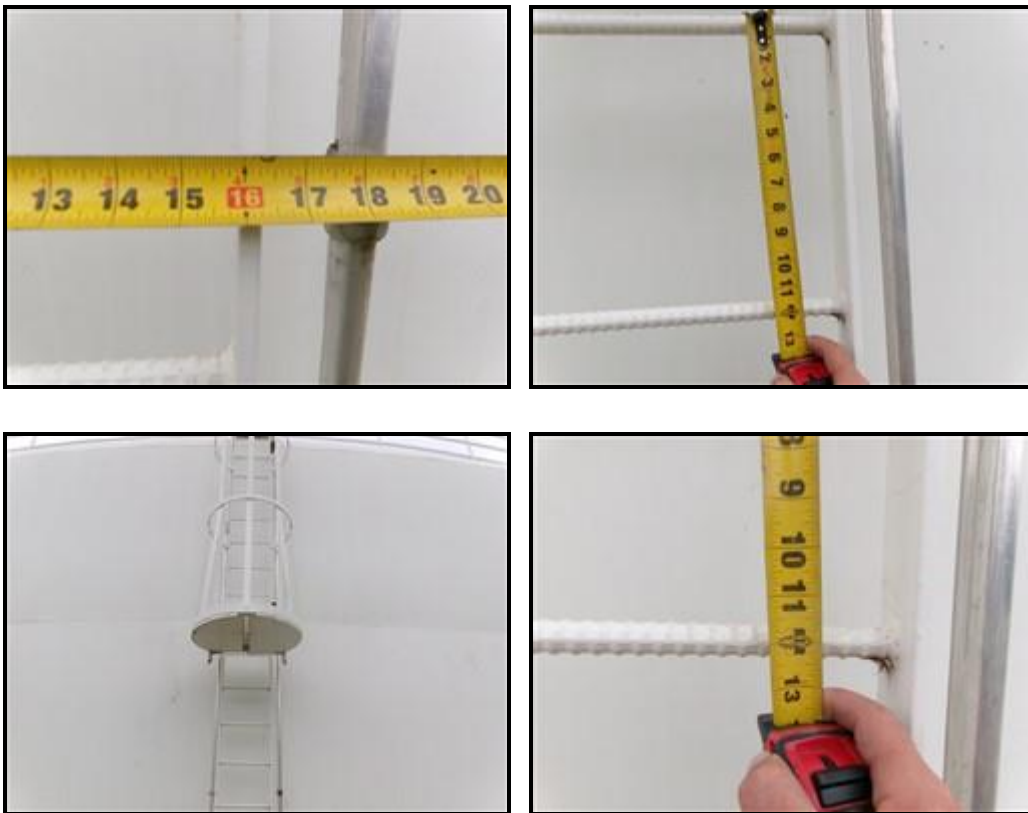
EXTERIOR INSPECTION

Security Fence:



This facility is surrounded by an 8-foot chain link and barbed wire security fence that was in good condition at the time of inspection. No abnormalities were reported.

External Ladder:



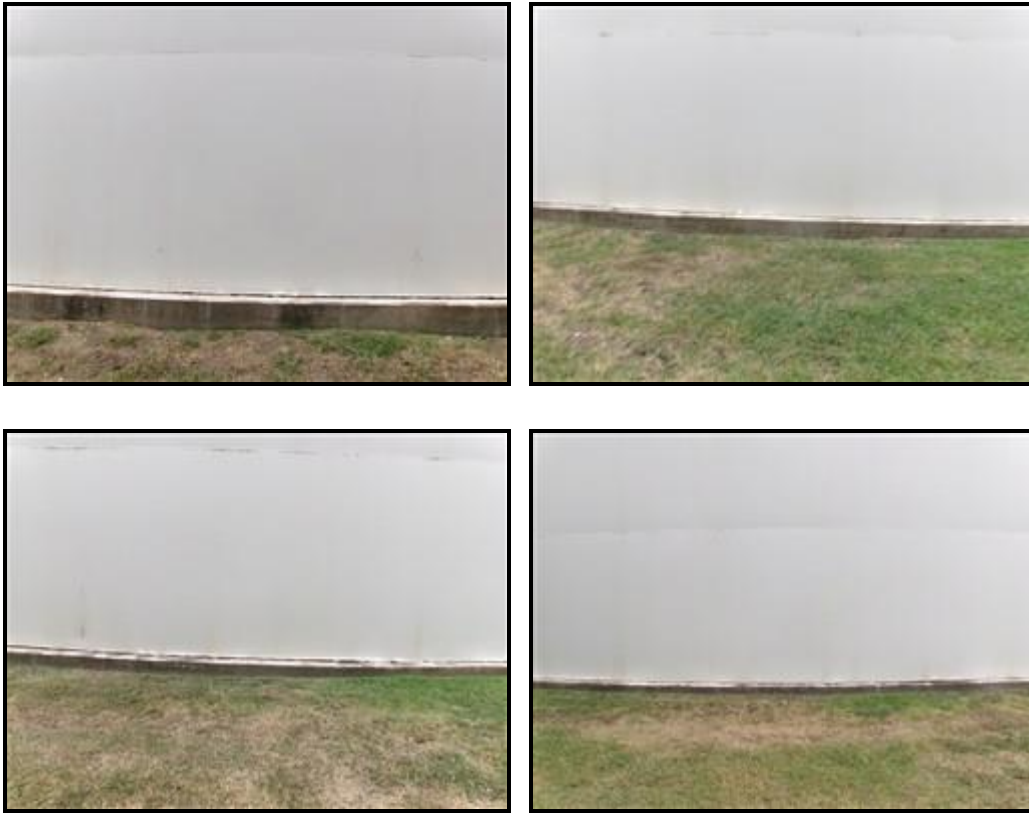
The external ladder was in good condition. It measures 16 inches in width and has rebar $\frac{3}{4}$ inch rungs with 1 foot spacing. The ladder is equipped with a 34 inch in diameter cage for fall protection that was also in good condition. No abnormalities were reported.

External Sidewall Plates:



The external sidewall plates were in good condition at the time of inspection. Light staining was reported. No other abnormalities were reported.

Foundation:



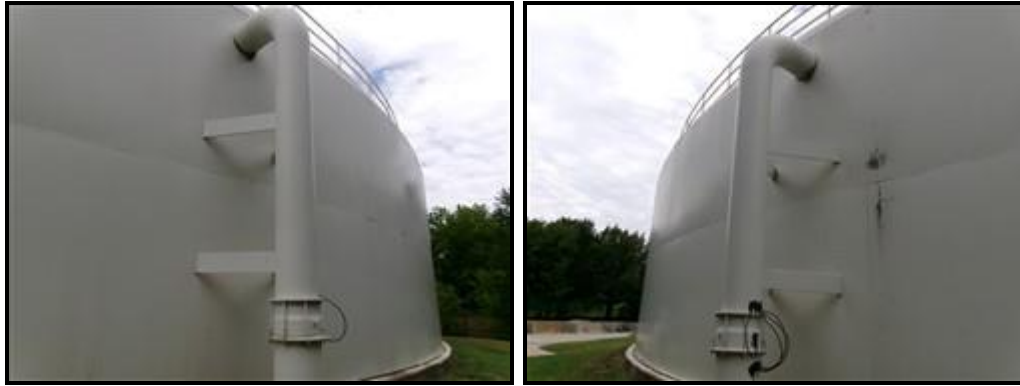
This facility rests on a concrete foundation that was in good condition at the time of the inspection.

Manway Access Hatch:



The two manway access hatches were in good condition at the time of inspection. The gaskets were intact, and no leaking was observed. One measured 38 inches and the other one measured 57 inches. Neither hatch was labeled as a “Confined Space” entry. **TEXAS TANK SERVICES** recommends installing “Confined Space” entry placards to the two manway access hatches.

Water Inlet:



The water inlet was in good condition at the time of inspection. It is located at the five o' clock position of the facility. No abnormalities were reported.

Water Outlet:



The water outlet was in good condition at the time of inspection. It is located at the one o' clock position of the facility. Light staining was reported. No other abnormalities were reported.

Overflow Pipe and Flapper:



The overflow pipe and flapper were in good condition at the time of inspection. It is located at the seven o' clock position of the facility. The pipe measures 16 inches in diameter and discharges 12 inches off the ground. The flapper measures 18 inches in diameter and maintains a good seal. Light corrosion was reported. No other abnormalities were reported.

Manual Drain:



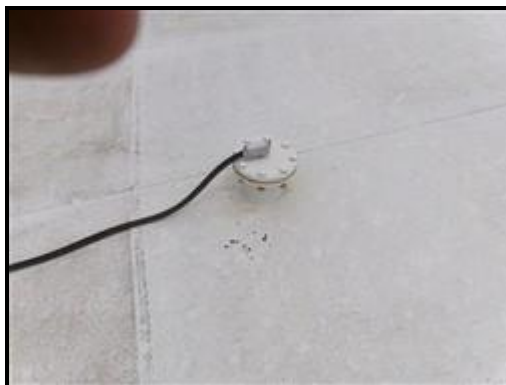
The manual drain was in good condition at the time of inspection. It is located at the eight o'clock position of the facility. Light staining was noted, No other abnormalities were reported.

Water Level Indicator:



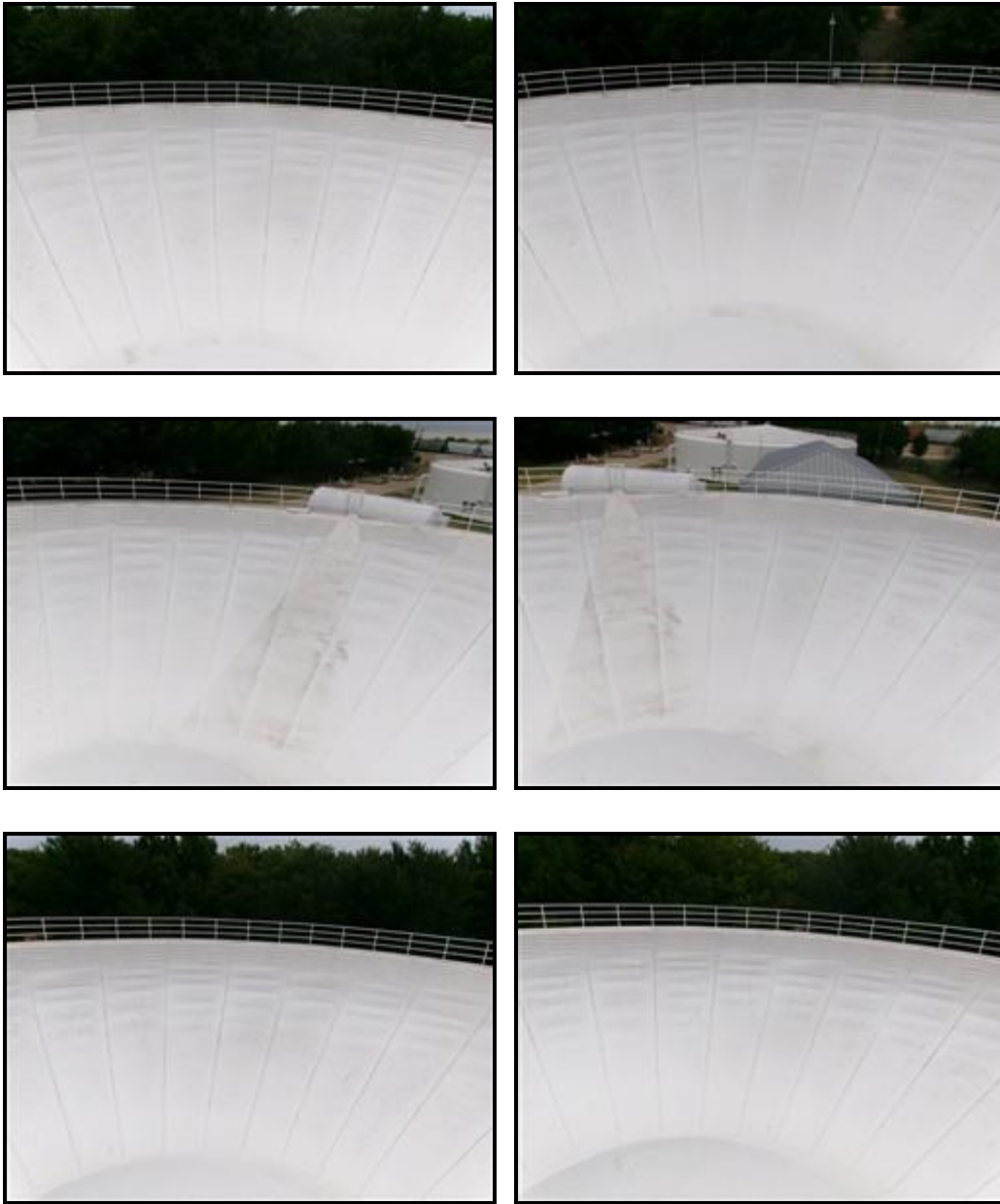
The electronic water level indicator was operable and in good condition at the time of inspection. No abnormalities were reported.

Anode Covers:



The one anode cover was in good condition at the time of inspection. No abnormalities were reported.

External Roof Plates:



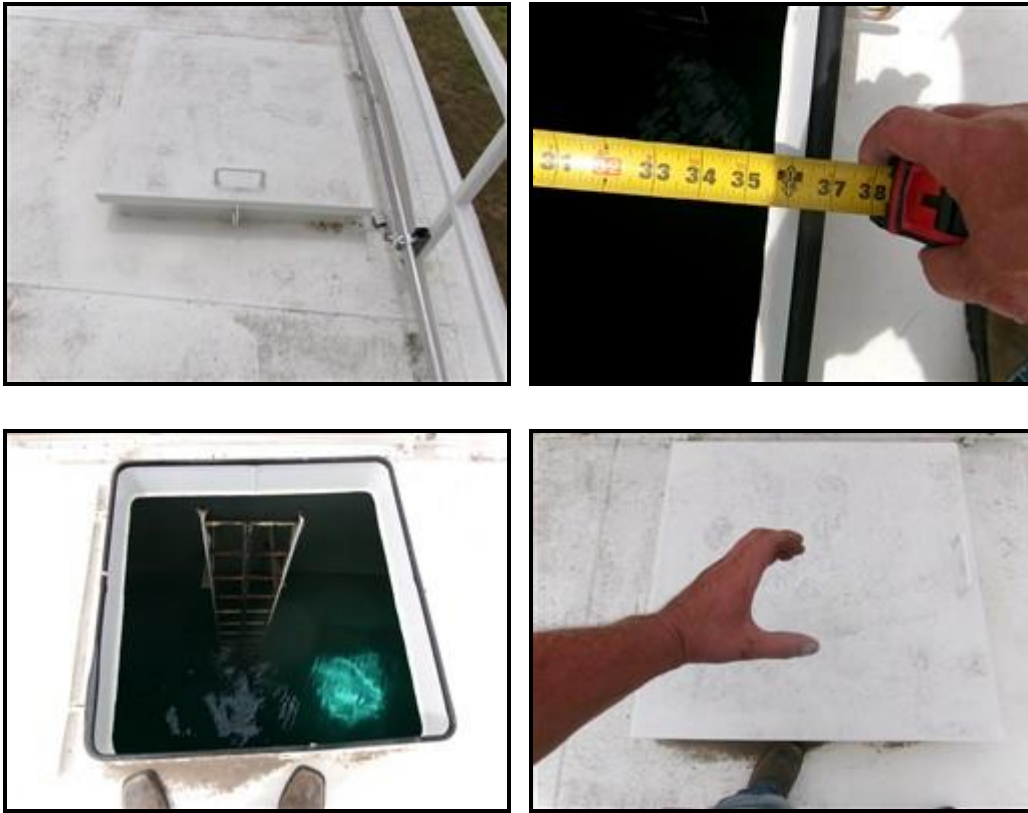
The external roof plates were in good condition at the time of inspection. Light staining and thinning of the protective coating were reported. No other abnormalities were reported..

Roof Ventilation Structure:



The mushroom shaped roof ventilation structure was in good condition. It is located in the center of facility on the roof plates and measures 20 inches in diameter. It is equipped with a 16-mesh screen that is also in good condition. No abnormalities were reported.

Water Access Hatch:



The water access hatch was in good condition. It is located at the twelve o’ clock position of the facility on the roof plates and measures 36 x 36 inches. The hatch was secured with a combination lock upon the arrival of the inspection crew. However, it was not labeled as a “Confined Space” entry. Light atmospheric staining was reported. **TEXAS TANK SERVICES** recommends installing a “Confined Space” entry placard to the water access hatch.

INTERIOR INSPECTION

Water Access Hatch:



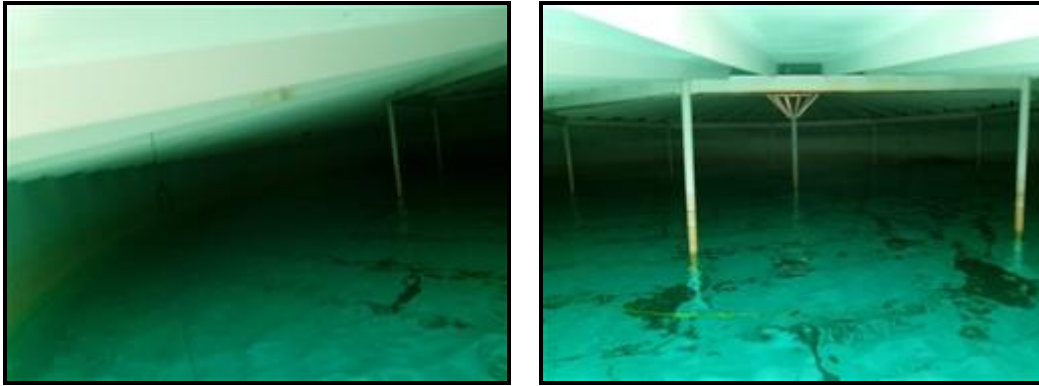
The water access hatch was in good condition upon internal inspection. Light staining was reported. No other abnormalities were reported.

Water Access Ladder:



The water access ladder was in fair to poor condition above the water line. It measures 16 inches in width and has round $\frac{3}{4}$ inch rungs with 1 foot spacing. The ladder is t equipped with a cable style fall protection. Heavy corrosion was reported on the ladder and fall protection. **TEXAS. TEXAS TANK SERVICES** recommends machine prepping the corroded areas of the water access ladder and fall protection and adding a new protective coating.

Internal Sidewall Plates:



The internal sidewall plates were in good condition above the water line. Light staining was reported. No other abnormalities were reported.

Overflow Flume:

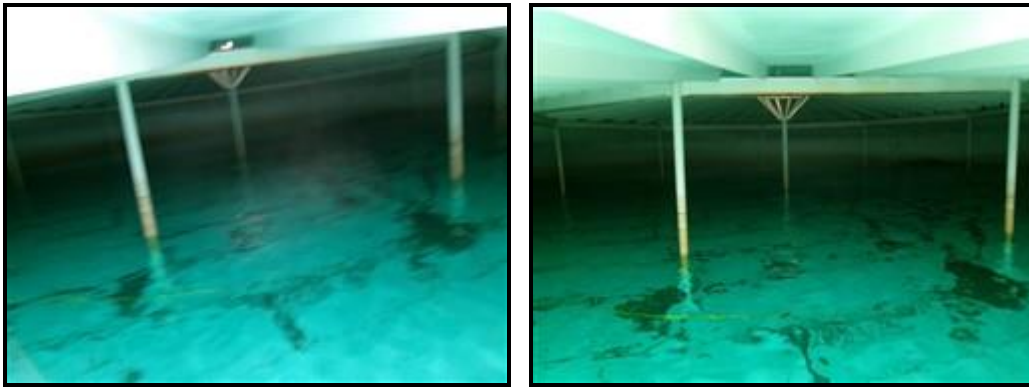


The overflow flume was in good condition at the time of inspection. It measures 3 ft x 3 ft. Light staining was reported. No other abnormalities were reported.

Water Inlet:

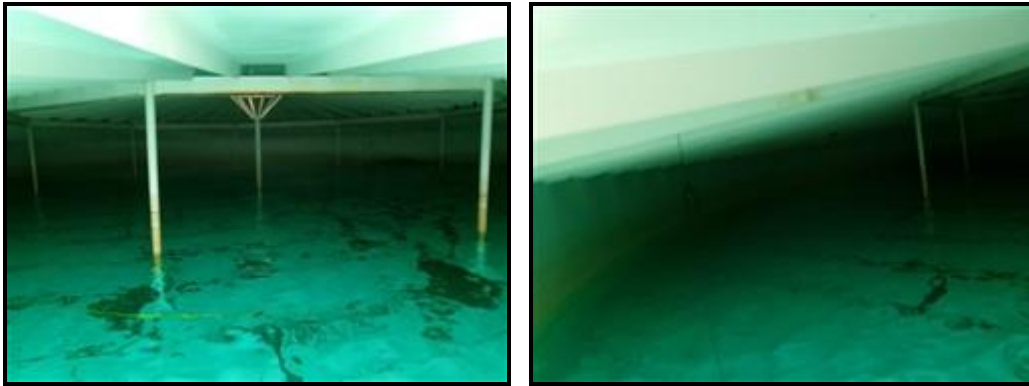
The water inlet was in good condition and active at the time of inspection. It is located at the five o' clock position of the facility. Light staining was reported. No other abnormalities were reported.

Support Columns:



The support columns were in good condition above the water line. Light staining and corrosion were reported. No other abnormalities **TEXAS TANK SERVICES** recommends monitoring the support columns for increased corrosion and possible machine prep and recoat in the future. were reported.

Internal Roof Plates:



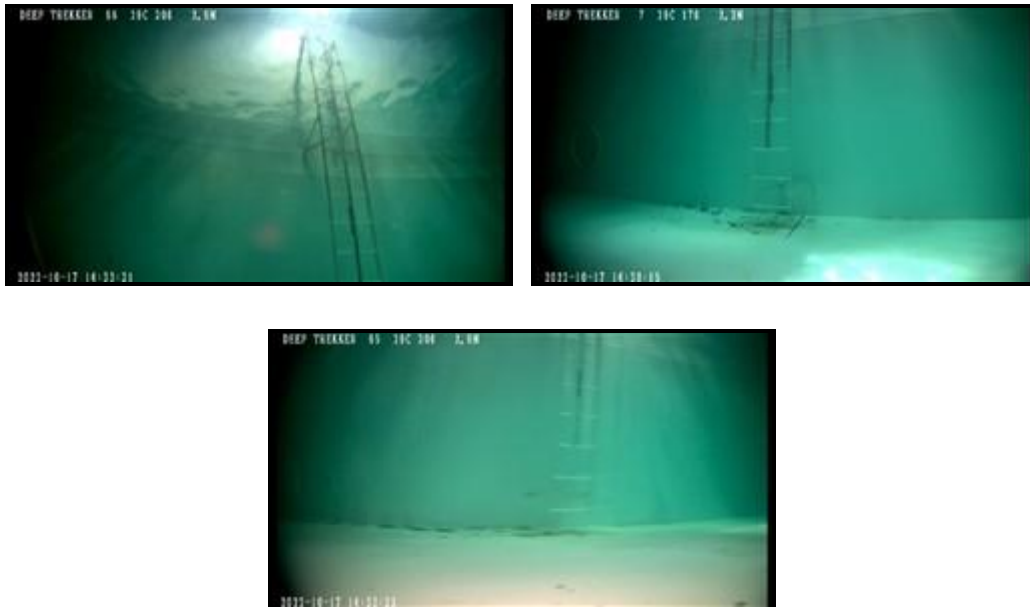
The internal roof plates were in good condition. Light condensation and corrosion were reported. **TEXAS TANK SERVICES** recommends adding and enlarging the ventilation structure due to the heavy amount of condensation currently accumulating within the facility. **TEXAS TANK SERVICES** recommends monitoring the internal roof plates for increased corrosion and possible machine prep and recoat in the future.

Roof Ventilation Structure:



The roof ventilation structure was in good condition upon internal inspection. It is located in the center of the facility on the roof plates and measures 20 inches in diameter. It is equipped with a 16-mesh screen that is also in good condition. No abnormalities were reported. **TEXAS TANK SERVICES** recommends adding and enlarging the ventilation structure due to the heavy amount of condensation currently accumulating within the facility.

Water Access Ladder (below the water line):



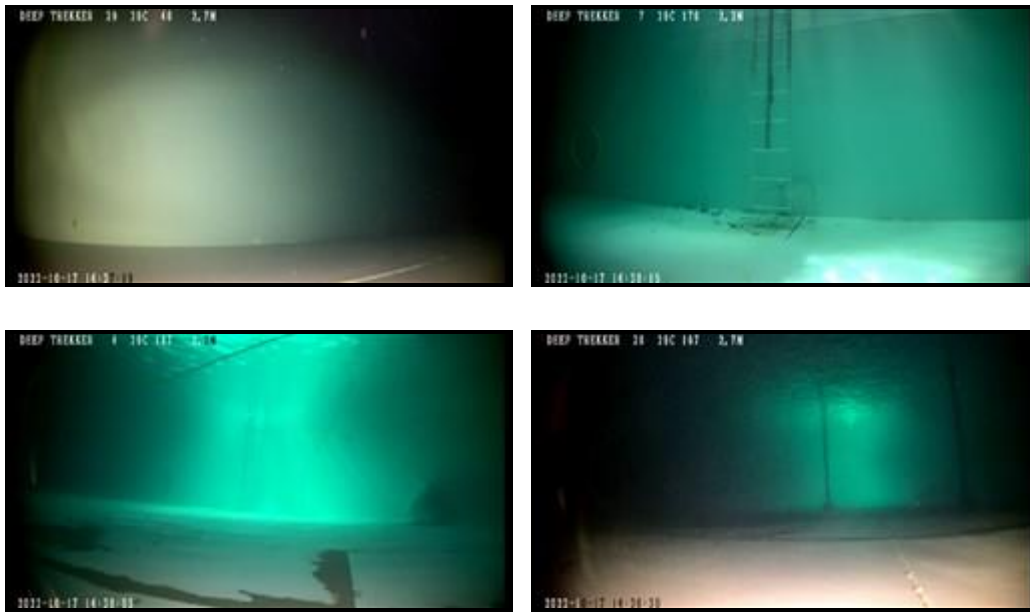
The water access ladder was in fair condition below the water line. It measures 16 inches in width and has round $\frac{3}{4}$ inch rungs with 1 foot spacing. The ladder is equipped with a cable style fall protection. Moderate staining and corrosion were reported. **TEXAS TANK SERVICES** also recommends performing a chemical power wash of the interior of the facility, utilizing Blue Earth Labs' product Floran, to remove staining and extend the life of this structure. **TEXAS TANK SERVICES also recommends** machine prepping the corroded areas of the water access ladder and adding a new protective coating.

Support Columns:



The support columns were in good condition below the water line. Moderate staining was reported. **TEXAS TANK SERVICES** recommends performing a chemical power wash of the interior of the facility, utilizing Blue Earth Labs' product Floran, to remove staining and extend the life of this structure.

Internal Sidewall Plates:



The internal sidewall plates were in good condition below the water line. Light staining was reported. No other abnormalities were reported. **TEXAS TANK SERVICES** recommends performing a chemical power wash of the interior of the facility, utilizing Blue Earth Labs' product Floran, to remove staining and extend the life of this structure.

Manway Access Hatches:



The two manway access hatches were in good condition at the time of inspection. They are located at the eleven and four o' clock positions of the facility. The gaskets were intact, and no leaking was observed. Light staining was reported. No other abnormalities were reported.

Water Outlet:



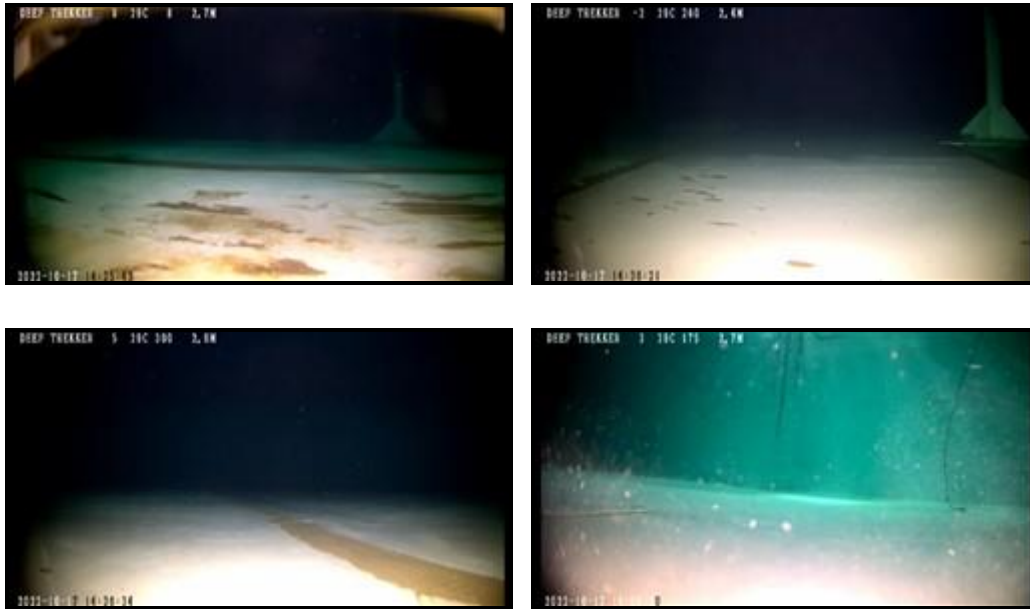
The water outlet was in good condition at the time of inspection. Light staining was reported. No other abnormalities were reported.

Manual Drain:



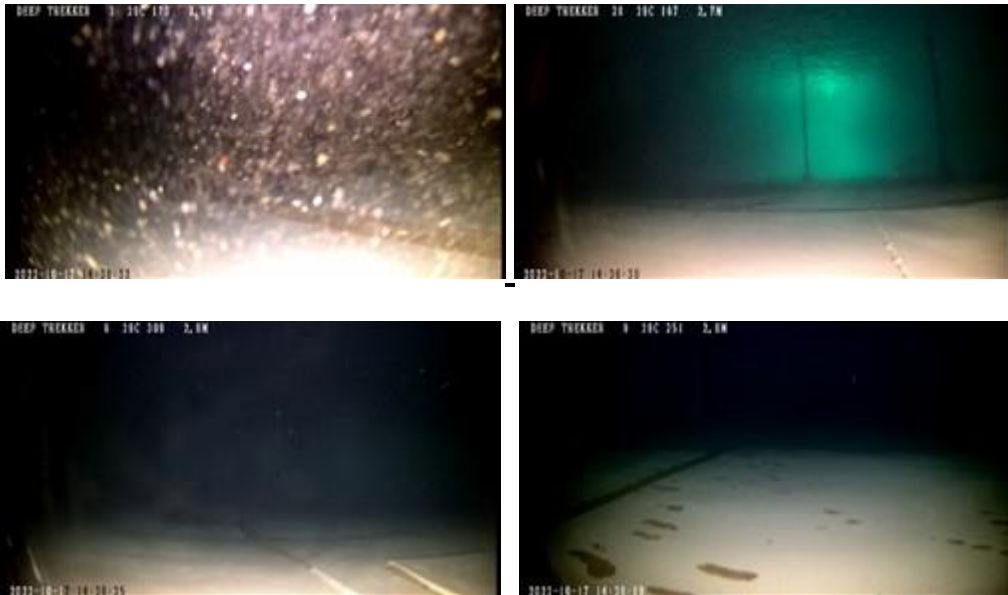
The manual drain was in good condition. Light staining and corrosion were reported. **TEXAS TANK SERVICES** recommends performing a chemical power wash of the interior of the facility, utilizing Blue Earth Labs' product Floran, to remove staining and extend the life of this structure.

Internal Floor Plates:



The internal floor plates were in good condition at the time of inspection. Light to moderate staining was reported. No other abnormalities were reported. **TEXAS TANK SERVICES** recommends performing a chemical power wash of the interior of the facility, utilizing Blue Earth Labs' product Floran, to remove staining and extend the life of this structure.

Sediment Depth:



The sediment depth was reported as heavy dusting. **TEXAS TANK SERVICES** recommends an in-service cleaning to remove this sediment in order to better evaluate the floor plates, as well as improve the quality of the water in this tank.

Water Condition:

The water condition was good. The clarity of the water was good, and the temperature was cool. No oils, insects, or odors were reported.

RECOMMENDATIONS

TEXAS TANK SERVICES would like to make the following suggestions to improve and extend the life of this facility:

1. Keep this facility on an annual maintenance program to maintain the integrity of this water storage facility and help preserve the quality of your water.
2. Perform an in-service cleaning to remove this sediment in order to better evaluate the floor plates, as well as improve the quality of the water in this tank.
3. Add “Confined Space Entry” placards to the water access hatch, and both manway access hatches.
4. Add and enlarge the ventilation structure due to the heavy amount of condensation currently accumulating within the facility to extend the life of this facility.
5. Machine prep the corroded areas of the water access ladder and fall protection and adding a new protective coating.
6. Monitor the center support columns and roof plates for increased corrosion and possible machine prep and recoat in the future.
7. Perform a chemical power wash of the interior of the facility, utilizing Blue Earth Labs’ product Floran, to remove staining and extend the life of this structure.