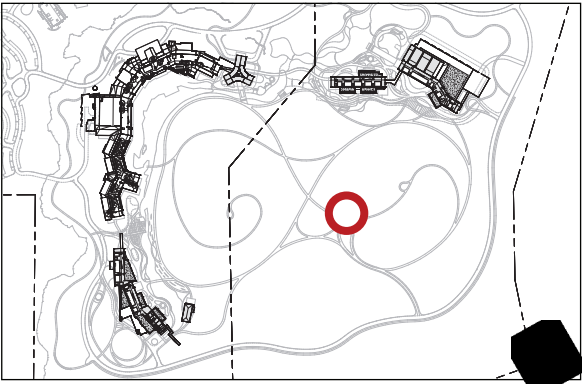
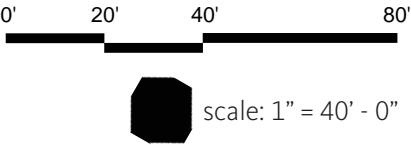
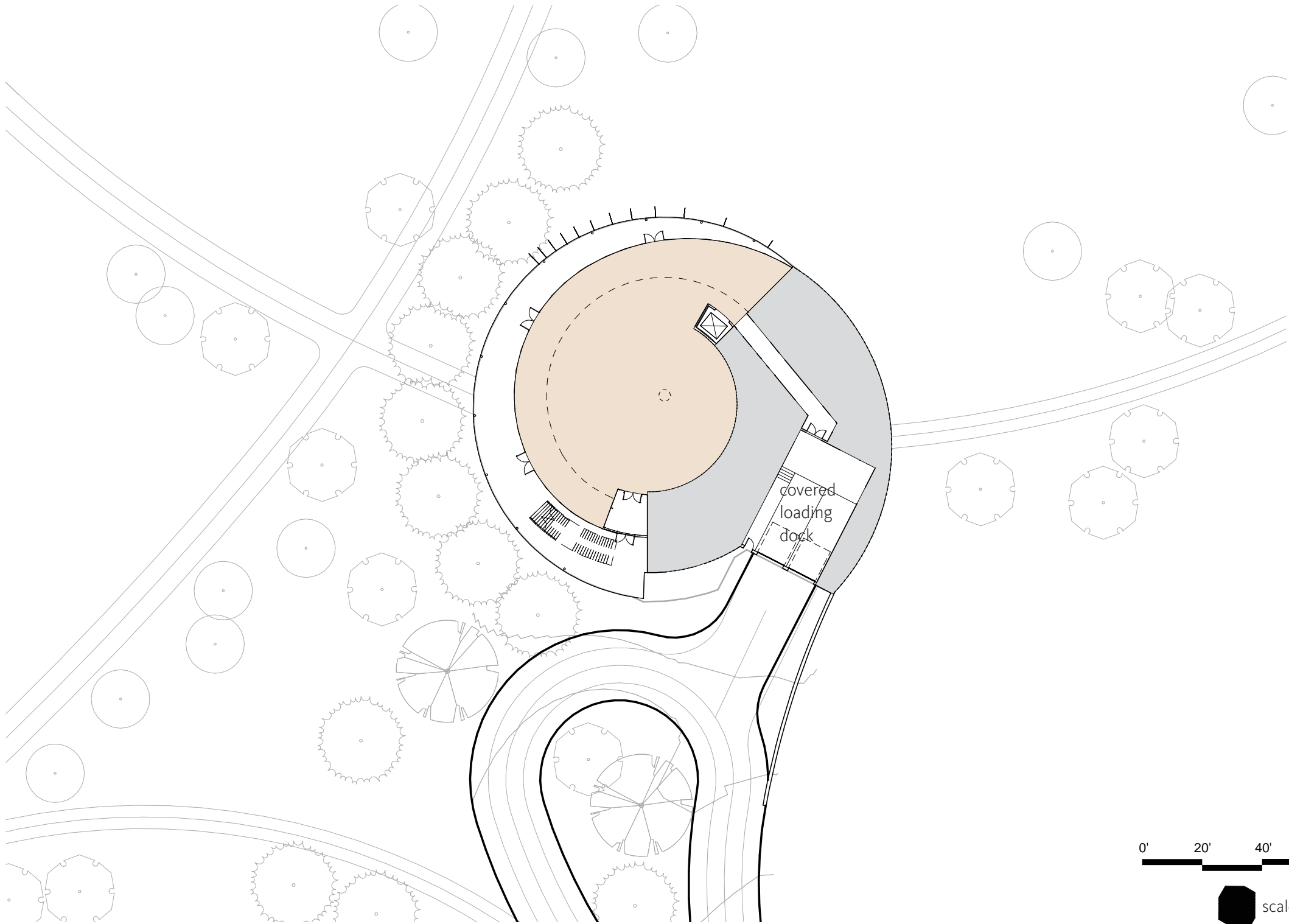
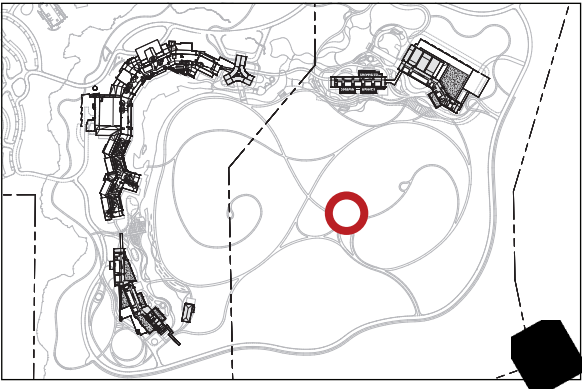
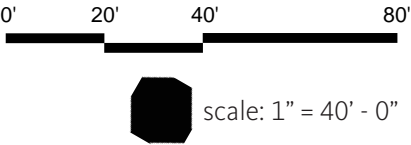
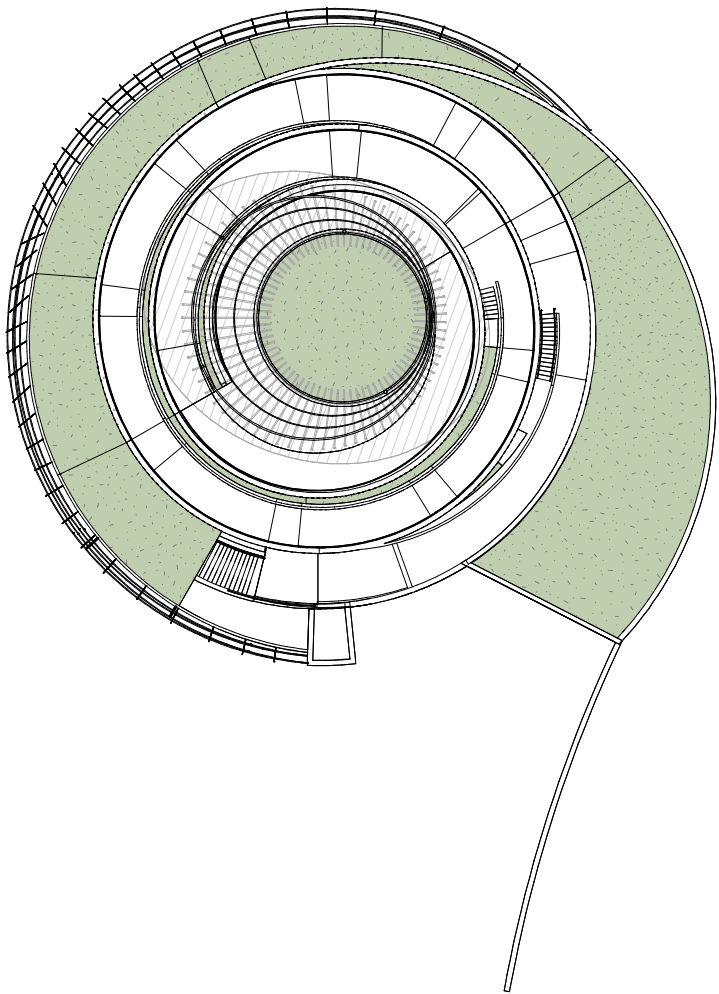
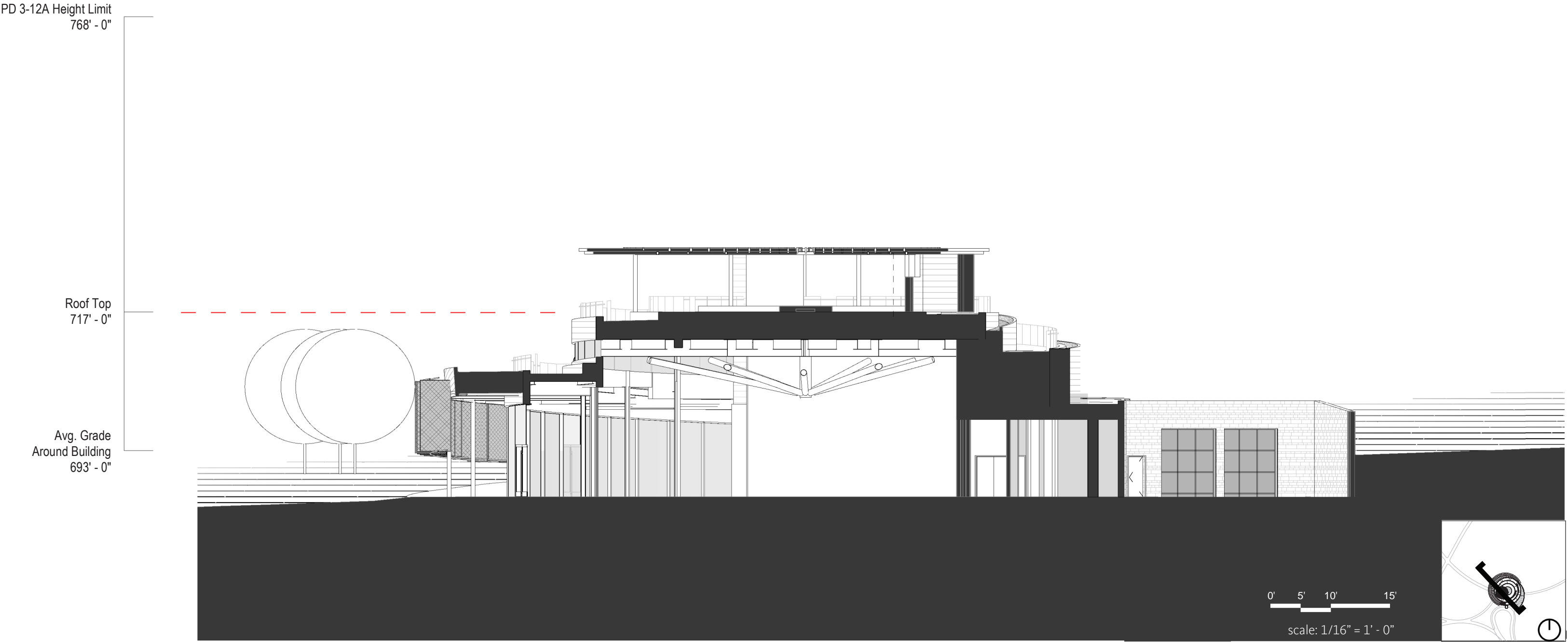


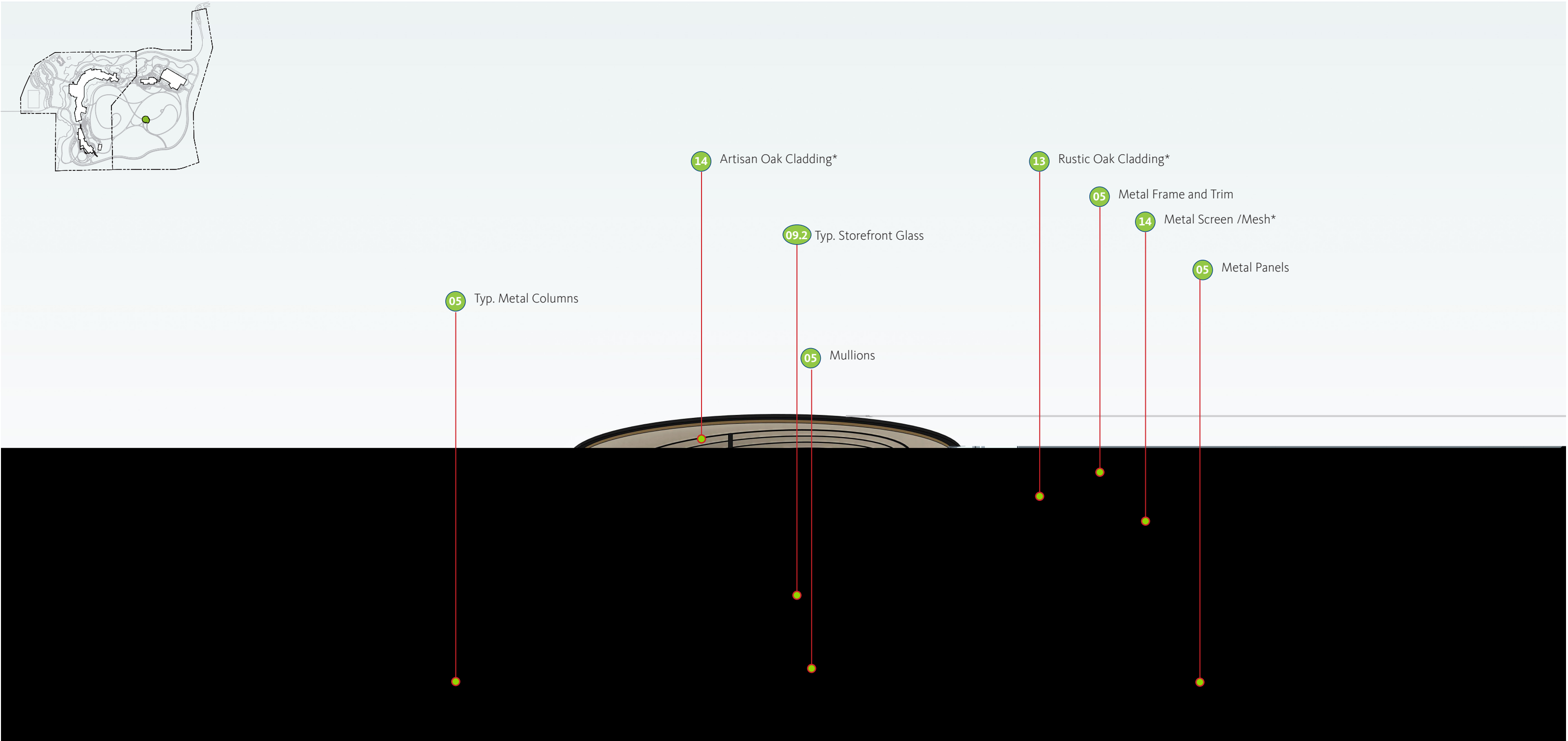
4 DELOITTE WAY

- floor plan
- roof plan
- sections
- elevations
- renderings

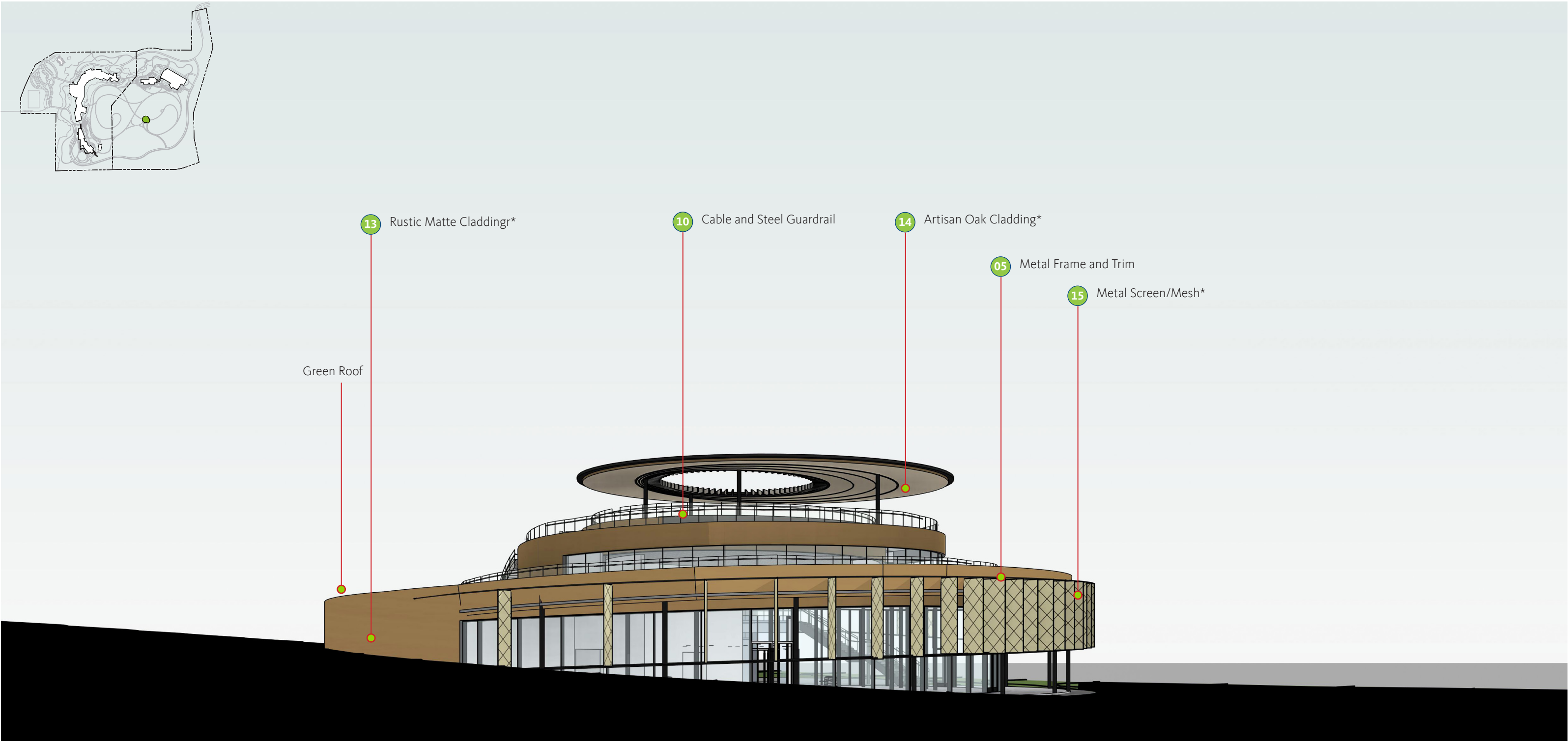






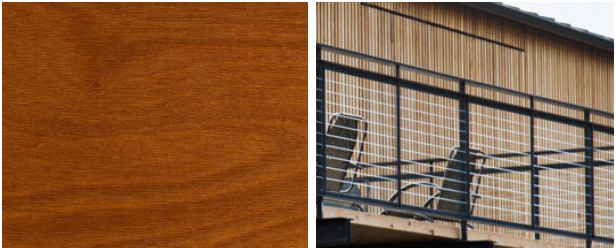


*New proposed material; compatible with DU1



*New proposed material; compatible with DU1

SE1 Building | Exterior Finishes - All Materials Match DU1 Unless Noted



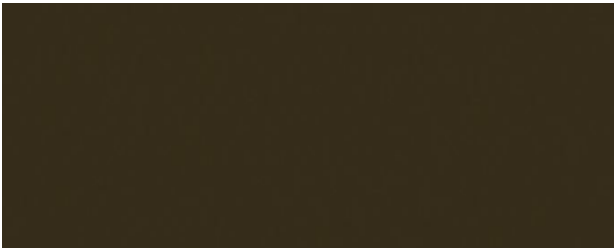
13 Rustic Matte Cladding* 10 Cable & Steel Guard-rail



14 Metal Roof with Artisan Oak Cladding*



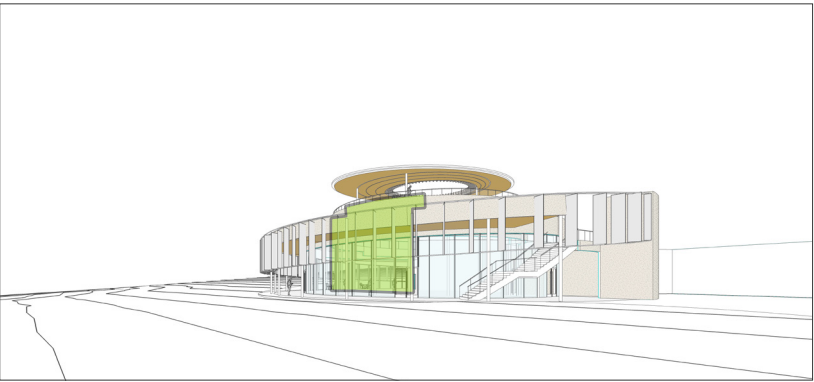
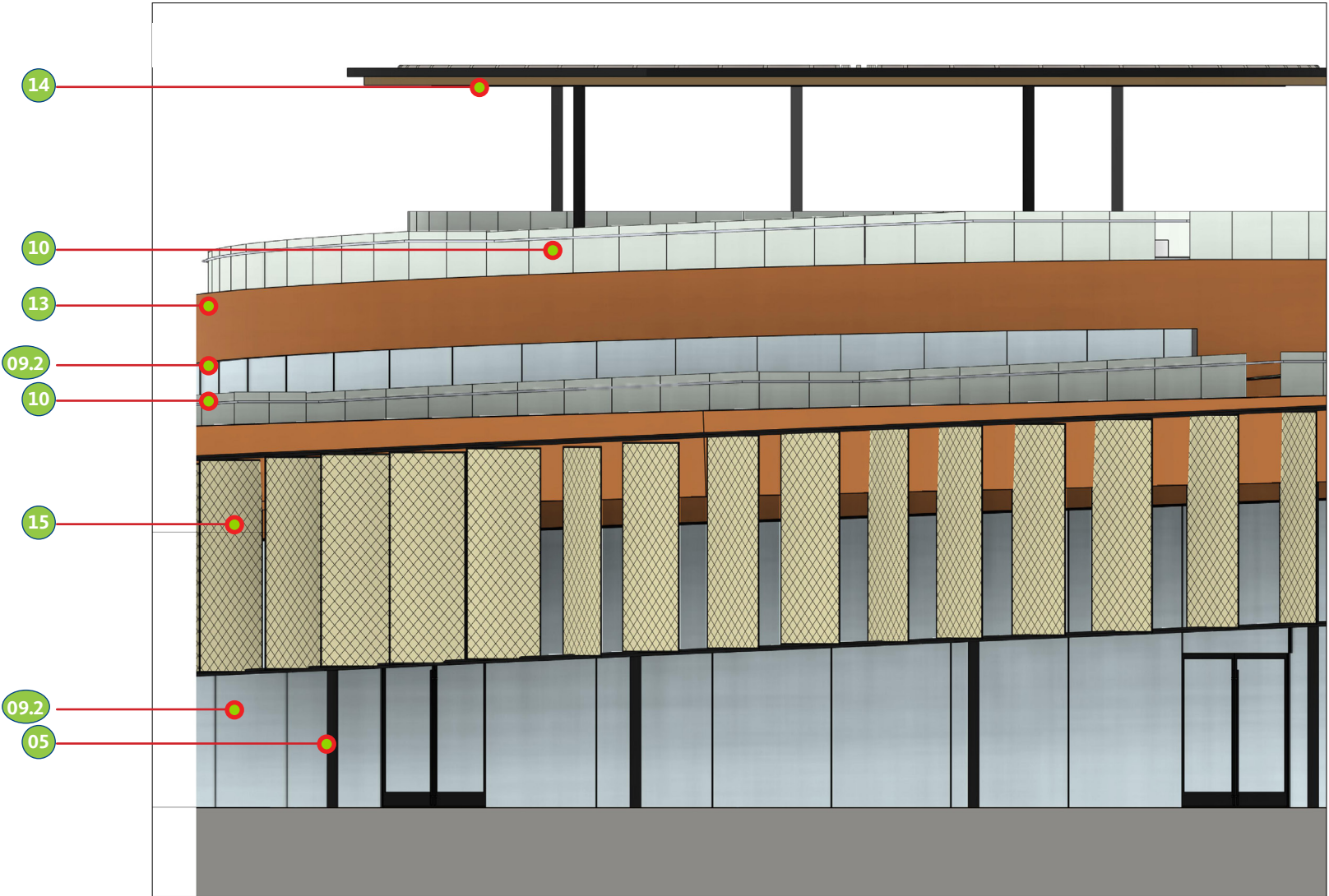
15 Metal Screen Mesh - Dark Bronze Metal Finish*



05 Metal Fin Frame at Guestroom Windows & Mullions



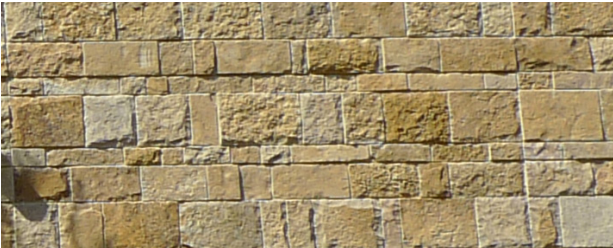
09.2 Curtain Wall Glass
Solarban 90 coating on Acuity glass
Color: Transparent with Low reflectivity
U Value - 0.29



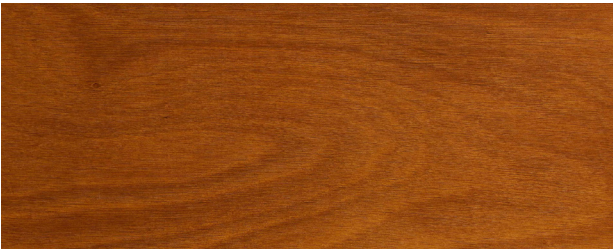
*New proposed material; compatible with DU1

South East Building 1		
Total Exterior Walls *	12,656 SF*	100%*
Masonry		3%
Concrete		15%
Wood Appearance		55%
Glazing		28%

*SF and percentage totals include the primary, exposed building exterior wall materials (e.g., Masonry, Wood Appearance, Glazing). Building roof, walking surfaces, landscaped areas, railings and architectural screening elements are excluded. Doors are calculated within the primary wall material SF and percentage (e.g., Masonry, Wood Appearance, Glazing). Punched windows are included within the Glazing areas.



04 Masonry (Texas Limestone Veneer)



13 Wood Appearance (Rustic Matte Cladding)



09 Glazing



16 Concrete (Board Formed Cast-in-place)



