



Town of Westlake

685 Thousand Gallon Ground

“Denton Highway”

August 9, 2023



TEXAS TANK SERVICES

103 STACY DRIVE
WHITEHOUSE, TX. 75791
1-866-788-3483

**INSPECTION REPORT #1
685 THOUSAND GALLON GROUND
“DENTON HIGHWAY”
TOWN OF WESTLAKE, TEXAS**

GENERAL INFORMATION:

Date of Inspection:	8/9/2023
Tank Size:	685 Thousand Gallons
Tank Type:	Metal Welded Ground

Introduction: When Texas Tank Services performs any inspection and in-service cleaning service, we strictly adhere to the standard of all divers and in-tank equipment in accordance with AWWA Standard C652-02 for disinfection. All gear and equipment entering the potable water tank are cleaned and disinfected, and the dressed diver is sanitized with a 200-PPM Chlorine concentration prior to entry into the system. The inspector/diver utilizes a helmet and dry suit and is in direct voice communication with external personnel.

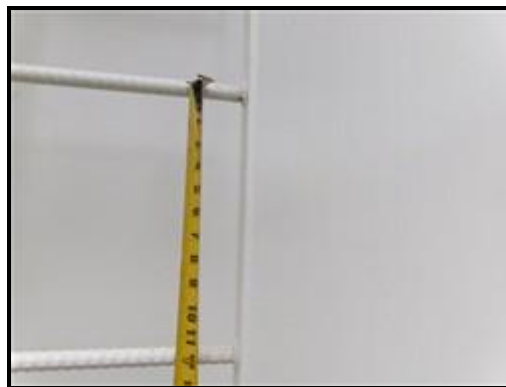
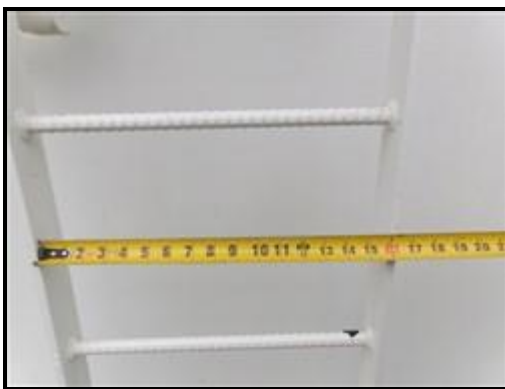
EXTERIOR INSPECTION

Security Fence:



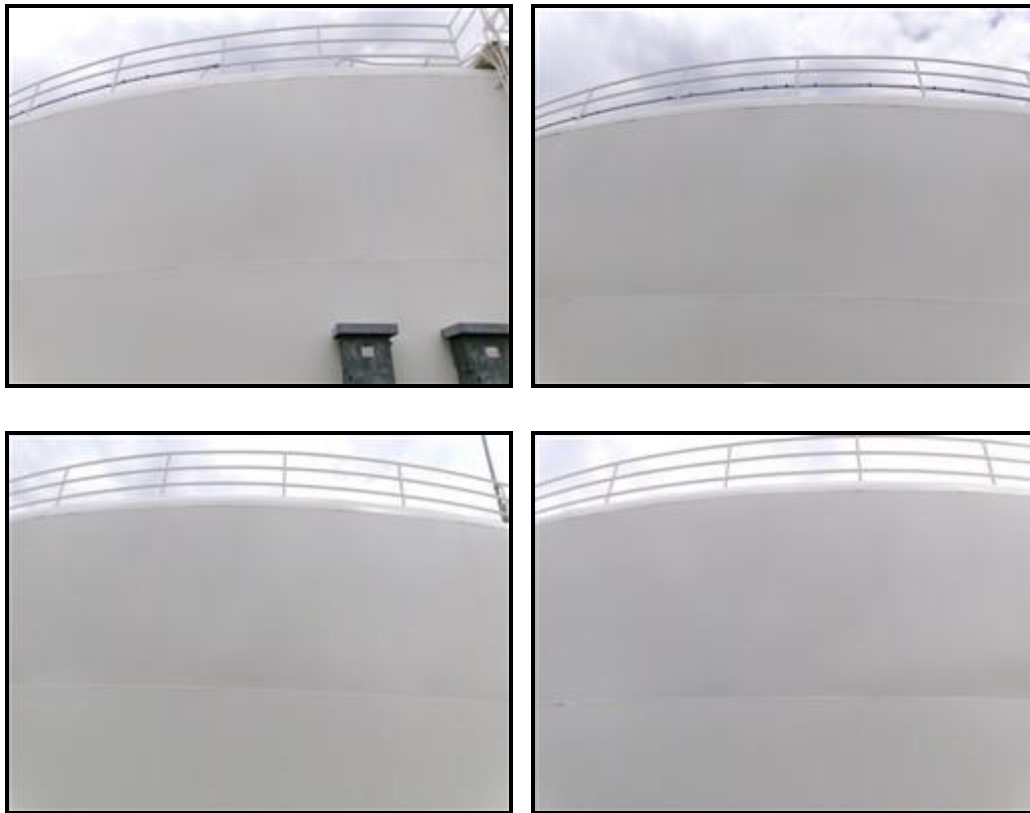
This facility is surrounded with a 8 foot chain link security fence that was in good condition at the time of inspection. No abnormalities were reported.

External Ladder:



The external ladder was in good condition. It measures 16 inches in width and has round $\frac{3}{4}$ inch rungs with 1 foot spacing. The ladder is equipped with a 36 inch in diameter cage for fall protection that was also in good condition. No abnormalities were reported.

External Sidewall Plates:



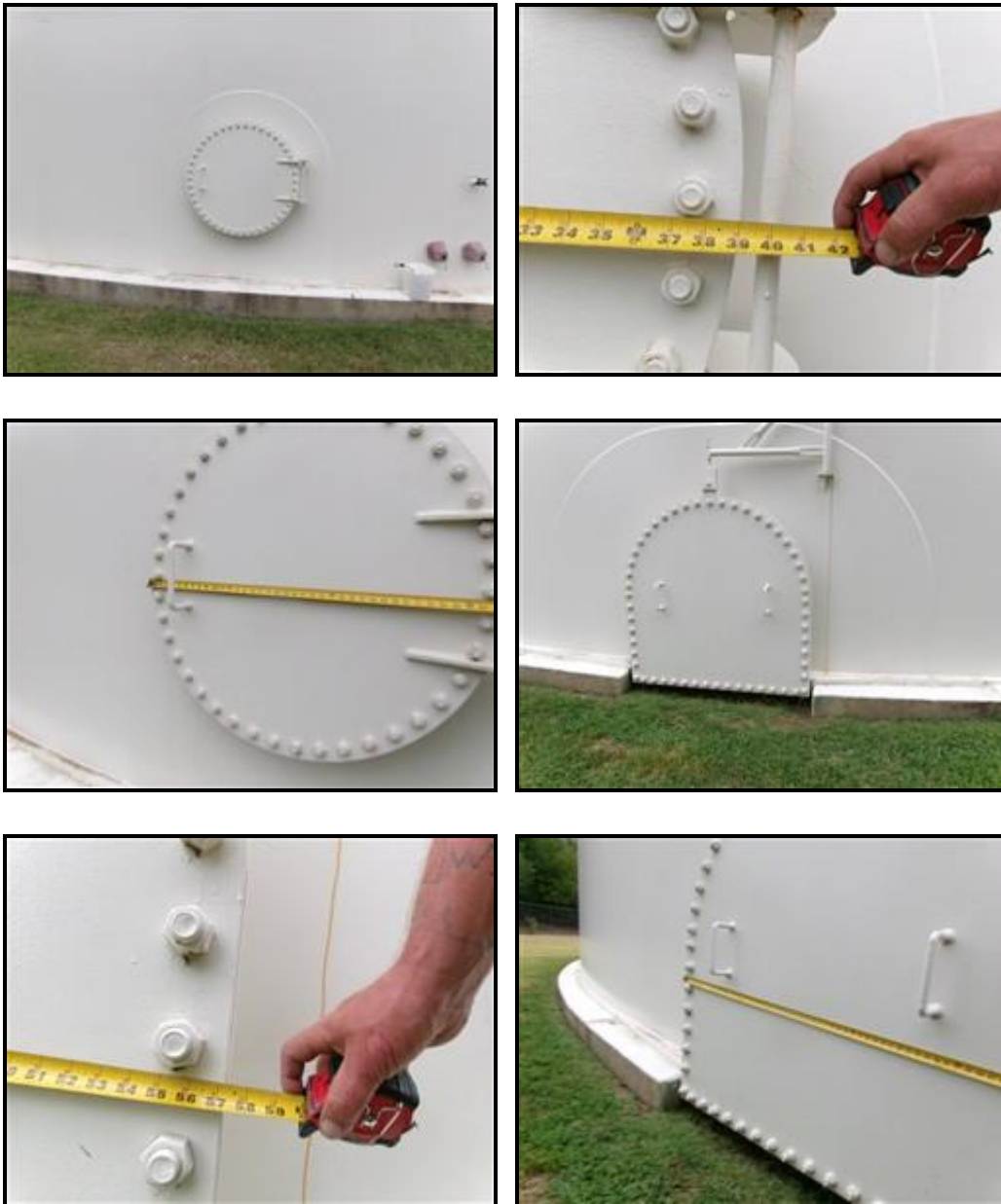
The external sidewall plates were in good condition at the time of inspection. No abnormalities were reported.

Foundation:



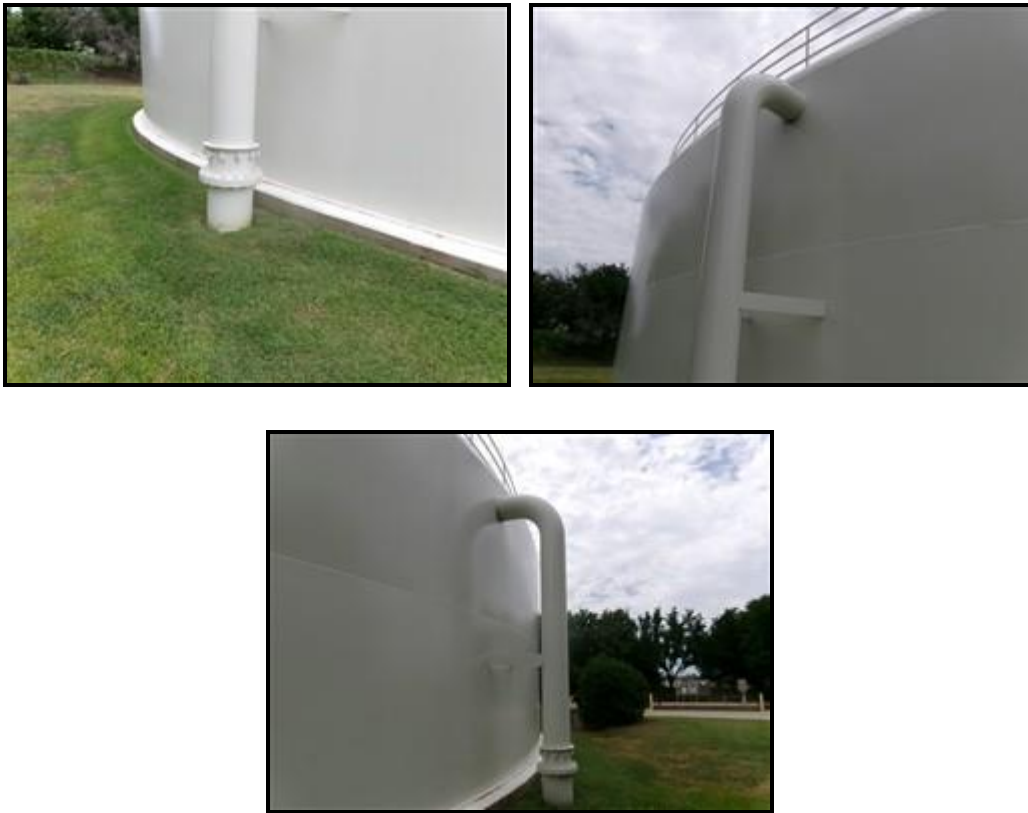
This facility rests on a concrete foundation that was in good condition at the time of the inspection.

Manway Access Hatches:



The two manway access hatches were in good condition at the time of inspection. The gaskets were intact, and no leaking was observed. One measures 57 inches and the other measures 39 inches. Neither of the hatches were labeled as “Confined Space” entries. **TEXAS TANK SERVICES** recommends installing a “Confined Space” entry placard to the manway access hatches.

Water Inlet:



The water inlet was in good condition at the time of inspection. No abnormalities were reported.

Water Outlet:



The water outlet was in good condition at the time of inspection. It is located at the eleven o' clock position of the facility. No abnormalities were reported.

Overflow Pipe and Flapper:



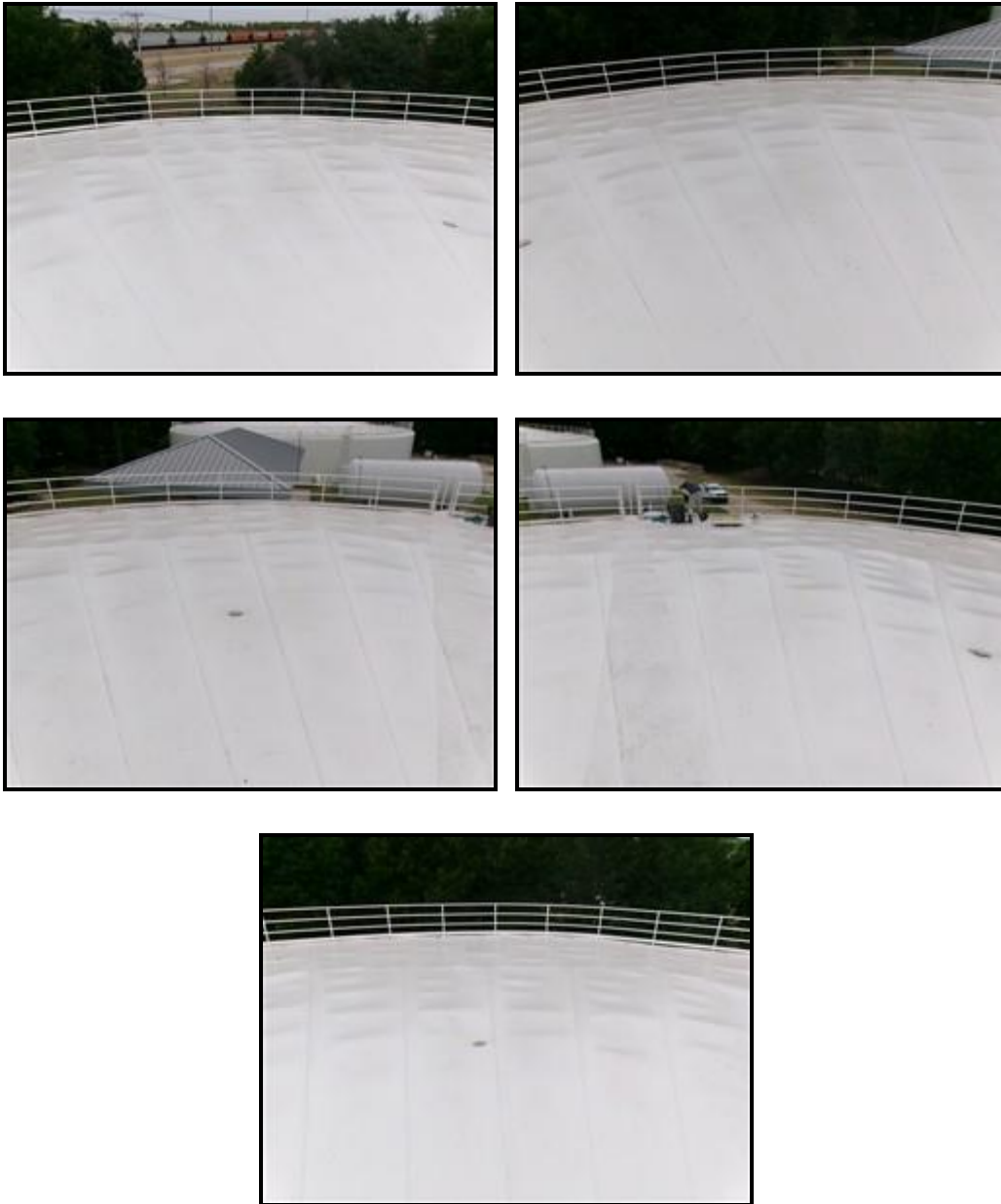
The overflow pipe and flapper were in good condition. They are located at the three o' clock position of the facility. The pipe measures 16 inches in diameter and discharges 11 inches off the ground. The flapper measures 18 ½ inches. Light staining was reported inside of the pipe. No other abnormalities were reported.

Water Level Indicator:



The electronic water level indicator was operable and in good condition at the time of inspection. It is located at the twelve o' clock position of the facility. No abnormalities were reported.

External Roof Plates:



The external roof plates were in good condition at the time of inspection. Light staining was noted. No other abnormalities were reported.

Roof Ventilation Structure:



The mushroom shaped roof ventilation structure was in good condition. It is located in the center of facility on the roof plates and measures 22 inches in diameter. It is equipped with a 16-mesh screen that is also in good condition. No abnormalities were reported.

Anode Cover:



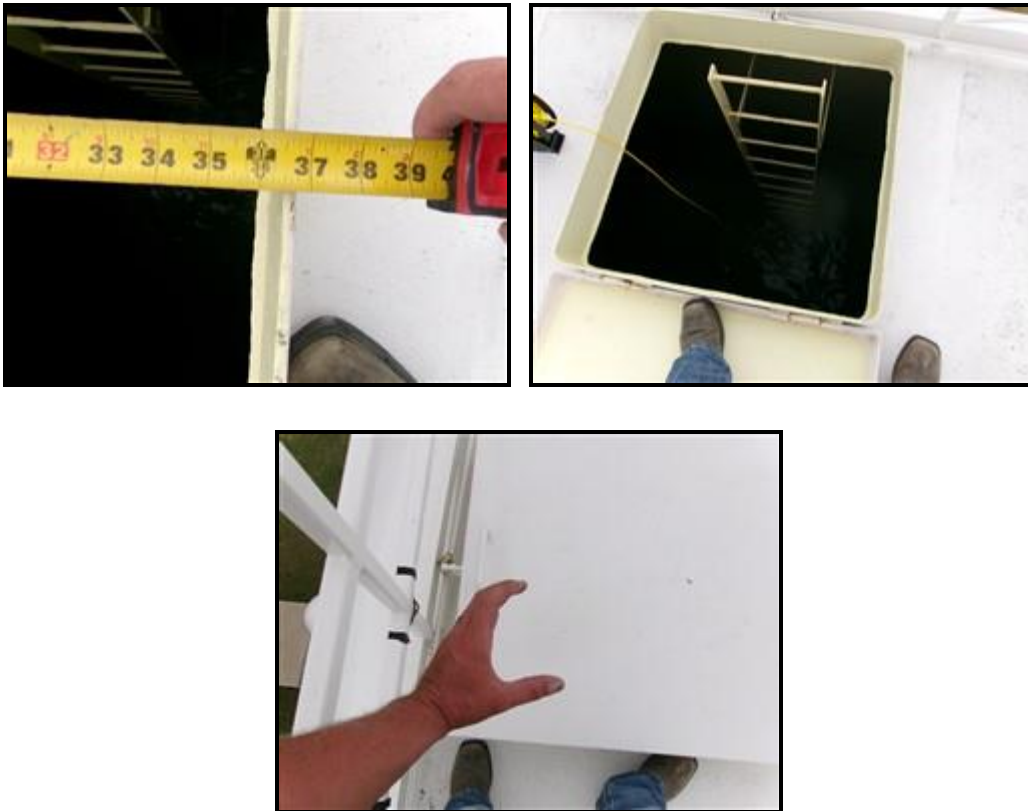
The one anode cover was in good condition. No abnormalities were reported.

Overflow Burst Disc:



The overflow burst disc was in good condition. It measures 38 inches. The burst disc was not labeled as a “Confined Space” entry. **TEXAS TANK SERVICES** recommends installing a “Confined Space” entry placard to the overflow burst disc.

Water Access Hatch:



The steel water access hatch was in good condition. It is located at the twelve o'clock position of the facility on the roof plates and measures 36x 36 inches. The hatch was secured with a combination lock however it was not labeled as a "Confined Space" entry upon the arrival of the inspection crew. **TEXAS TANK SERVICES** recommends installing a "Confined Space" entry placard to the water access hatch.

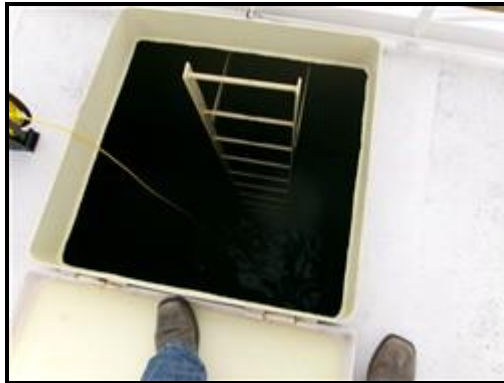
INTERIOR INSPECTION

Water Access Hatch:



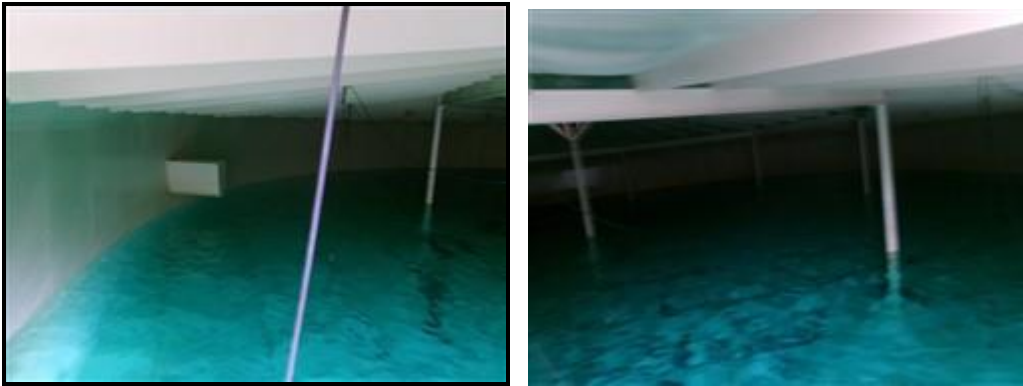
The water access hatch was in good condition upon internal inspection. No abnormalities were reported.

Water Access Ladder:



The water access ladder was in good condition above the water line. It measures 16 inches in width and has rebar $\frac{3}{4}$ inch rungs with 1 foot spacing. This ladder was not equipped with fall protection. Light to moderate staining was noted. **TEXAS TANK SERVICES** recommends installing fall protection on the water access ladder to insure the safety of anyone accessing this component.

Internal Sidewall Plates:



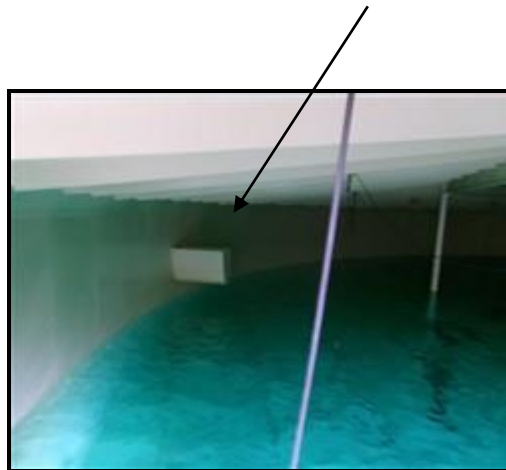
The internal sidewall plates were in good condition above the water line. No abnormalities were reported.

Water Level Indicator Probe:



The water indicator probe was in good condition at the time of inspection. It is located at the one o'clock positions of the facility. Components were in position, and the system was intact. No abnormalities were reported.

Overflow Flume:



The overflow flume was in good condition. The box style flume is located at the three o' clock position of the facility. Light staining was reported. No other abnormalities were reported.

Water Inlet:



The water inlet was inactive and in good condition. It is located at the five o' clock position of the facility and measures 16 inches in diameter. Light staining was reported. No other abnormalities were reported.

Center Support Column:



The center support column was in good condition above the water line. Light staining was reported. No other abnormalities were reported.

Internal Roof Plates:



The internal roof plates were in good condition. Light condensation was reported. No other abnormalities were found.

Roof Ventilation Structure:



The roof ventilation structure was in good condition upon internal inspection. It is located in the center of the facility on the roof plates and measures 22 inches in diameter. It is equipped with a 16-mesh screen that is also in good condition. No abnormalities were reported.

Water Access Ladder (below the water line):



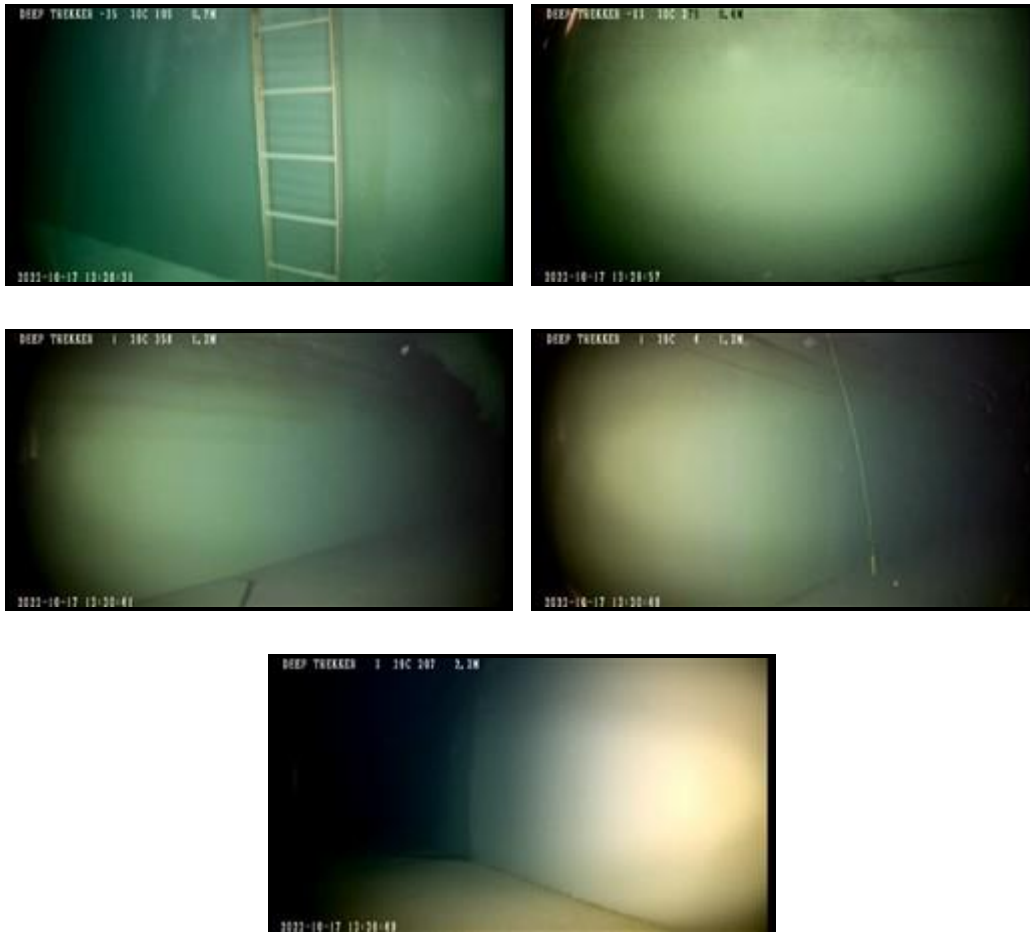
The water access ladder was in fair condition below the water line. It measures 16 inches in width and has $\frac{3}{4}$ inch rungs with 1 foot spacing. The ladder was not equipped with fall protection. Moderate staining and corrosion were reported. **TEXAS TANK SERVICES** recommends machine prepping the corroded areas of the water access ladder and adding a new protective coating. **TEXAS TANK SERVICES also recommends** installing fall protection to the water access ladder to insure the safety of anyone accessing this component.

Center Support Column:



The center support column was in good condition below the water line. Light staining and corrosion were reported on the center support column. No other abnormalities were reported. **TEXAS TANK SERVICES** recommends machine prepping the corroded areas of the center access column and adding a new protective coating.

Internal Sidewall Plates:



The internal sidewall plates were in good condition below the water line. Light staining and corrosion were reported. No other abnormalities were reported. **TEXAS TANK SERVICES** recommends monitoring the interior sidewall plates of the facility for additional corrosion and protective coating failure and considering the facility for an exterior sandblast and recoat to extend the life of this structure.

Manway Access Hatches:



The two manway access hatches were in good condition at the time of inspection. They are located at the three and eight o' clock positions of the facility. The gaskets were intact, and no leaking was observed. Light staining was reported. No other abnormalities were reported.

Water Outlet:



The water outlet was in good condition at the time of inspection. It is located at the eleven o'clock position of the facility and is equipped with a safety gate. Light staining was reported. No other abnormalities were reported.

Manual Drain:



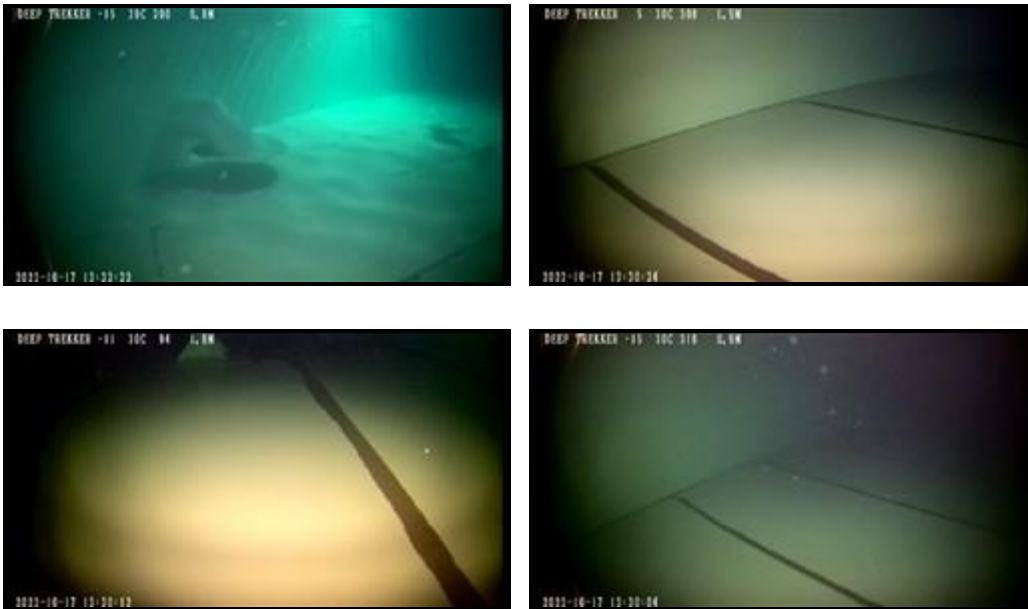
The manual drain was in good condition at the time of inspection. It is located at the three o'clock position of the facility. Light staining was reported. No other abnormalities were reported.

Internal Floor Plates:



The internal floor plates were in good condition at the time of inspection. Light to moderate staining was reported. **TEXAS TANK SERVICES** recommends performing a chemical power wash of the interior of the facility, utilizing Blue Earth Labs' product Floran, to remove staining and extend the life of this structure.

Sediment Depth:



The sediment depth was reported as a heavy dusting consisting of sand. **TEXAS TANK SERVICES** recommends an in-service cleaning to remove this sediment in order to better evaluate the floor plates, as well as improve the quality of the water in this tank.

Water Condition:

The water condition was good. The clarity of the water was good and the temperature was cool. No oils, insects, or odors were reported.

RECOMMENDATIONS

TEXAS TANK SERVICES would like to make the following suggestions to improve and extend the life of this facility:

1. Keep this facility on an annual maintenance program to maintain the integrity of this water storage facility and help preserve the quality of your water.
2. Perform an in-service cleaning on this facility. Removal and discharge of all sediment should improve the water quality as well as extend the life of this facility.
3. Add “Confined Space Entry” placards to the water access hatch, two manway access hatches and overflow burst disk.
4. Install fall protection to the water access ladder to insure the safety of anyone accessing this component.
5. Machine prep the corroded areas of the center access column and water access ladder and adding a new protective coating.
6. Monitor the interior sidewall plates of the facility for additional corrosion and protective coating failure and consider the facility for an interior sandblast and recoat to extend the life of this structure.
7. Perform a chemical power wash of the interior of the facility, utilizing Blue Earth Labs’ product Floran, to remove staining and extend the life of this structure.